

---

# **ASSEMBLY & OPERATION INSTRUCTIONS**



## **10 TON PORTABLE AIR LIFT JACK/SAFETY STAND**

---

SAVE THESE INSTRUCTIONS. It is important that you read the entire manual to become familiar with the unit BEFORE you begin.

### **Technical Specifications**

Tool Name:	10 Ton Portable Air Lift jack
Material:	ALL Steel
Stroke:	11.5"
Saddle Size:	4"x4"
Min. Air Req. at Rated Capacity:	200psi
Starting Height:	17.6" to 39.6"
Max. Lift:	51.18" (with optional extension-95")
N.W:	176lbs
Base Diameter:	13.5"
Handle Length:	38.5"
Whole Diameter:	7.875"
Frame Diameter:	4"
Ram Length:	14.13
Air Fittings:	1/4 " NPT
Hose Size:	3/8 "
Hose Length:	94"

## **IMPORTANT SAFETY INSTRUCTIONS!**

**READ ALL INSTRUCTIONS BEFORE USING THIS PRODUCT!**

**Warning:** The warnings, cautions and instructions discussed in this Manual cannot cover all possible conditions and situations that may occur. It must be understood by the operator that COMMON SENSE AND CAUTION ARE FACTORS TO BE SUPPLIED BY THE OPERATOR.

**Warning:** **ALWAYS** insert the extra pin provided, through the main cylinder Ram at the lowest hole position, and after the load has reached the desired height, **EXPEL ALL THE AIR FROM THE JACK!! FALIURE TO FOLLOW THIS PROCEDURE COULD RESULT IN SERIOUS HARM OR DEATH!!** This procedure will allow the unit to function as a Safety Stand with the load resting on the Safety Pin.

### **The Operator:**

1. Do not wear loose clothing or jewelry as they can be caught in moving parts.
2. Protective gloves and non-skid footwear is recommended.
3. Wear restrictive hair covering to contain long hair.
4. Use eye and ear protection. Always wear ANSI approved impact safety goggles.
5. Maintain proper footing and balance at all times.

---

### **Work Area**

TO AVOID RISK OF PERSONAL INJURY, EQUIPMENT DAMAGE, FIRE AND SHOCK, MAKE SURE YOUR **WORK AREA** IS:

- Free of damp, wet or rainy conditions.
- Free of flammable gases and liquids.
- Well-lit.
- Clean and uncluttered.
- Well-ventilated.

### **Assembly**

Your Portable Air-Jack will require some minor assembly.

It is important that you read the entire manual to become familiar with the unit BEFORE you use it. Be sure that you have all parts described in the Parts List. To help you with assembly, please refer to the assembly diagram and the parts list on page 6.

**Step.1)** The Handle is removable, and should be installed whenever you are moving the Air Jack Slide the Handle onto its base as shown in the Assembly Diagram.

### **Air connection**

**Step.1)** You will need a Union fitting (sold separately) before you can connect your Portable Air Jack to an air compressor. Attach the Union fitting to the Air inlet and tighten the fitting.

**Step.2)** Attach an Air Coupler (sold separately) to the Union fitting if desired.

### **Before Operating**

Before operating you Portable Air-Jack, check for damaged parts.

**WARNING:** Before lifting the load, become familiar with the use of the jack's ram Tube, saddle tube, extension tube, and pins provided. While the jack is pressurized, as sudden loss of load will cause the ram tube, saddle tube and/or extension tube to rise with sufficient force to cause severe personal injury and /or property damage.

**DO not exceed the tools maximum capacity of 10t. Do not exceed Maximum PSI (200psi).**

Check for damaged parts. Before using any tool, any part that appears damaged should be carefully checked to determine that it will operate properly and perform its intended function.

### **Operation**

Never force the tool or attachment to do the work of a larger industrial tool. It is designed to do the job better and more safely at the rate for which it was intended.

**Setup:** Frequent lubrication is required for best performance. Oil added through the

---

airline connection will lubricate internal parts. An automatic airline oiler is recommended but oil may be added manually before every operation or after about one (1) hour of continuous use. Only a few drops of oil at a time are necessary. Too much oil will collect inside of the tool and be blown out during the exhaust cycle. Use only pneumatic tool oil. Do not use detergent oil or additives as these lubricants will cause accelerated wear to the seals in the tool.

**Dirt and water in the air supply are major causes of pneumatic tool wear.** Use a filter/oilier for better performance and longer life of the tool. The filter must have adequate flow capacity for the specific application. Consult the manufacturer's instructions for proper maintenance of your filter.

**The connector on the tool must not hold pressure when the air supply is disconnected. If the wrong fitting is used, the tool can remain charged with air after being disconnected and still be able to lift. See figure 1 for the recommended accessories and connection order.**

### **Using the Portable Air Jack**

The Portable Air Jack should be tested often and whenever it is suspected of working improperly. Do not use if working improperly.

**Step 1)** Position the vehicle you are working with on a hard, level surface. Make certain the parking brakes are "ON", when lifting trailers, lower any landing gear for support.

**Step 2)** Position the Air Jack(s) under the frame at locations recommended by the vehicle manufacturer (see the owner's manual).

**Step 3) Extend** the Lift Post and insert the pin into the adjustable hole. If necessary, use the Lift Post Extension to gain additional height. The Lift Post Extension slides inside of the Lift Post, It is held in place by use of a Pin, which is inserted through the holes in both the Lift Post and the Lift Post Extension.

**Step 4) Connect** the Air compressor hose to the Valve. Turn on the compressor. Push the Valve marked "UP" to raise the Lift Post so that it makes contact with the frame of the vehicle. Make certain that the load is centered with the Lift Post and positioned to prevent load slippage.

**Step 5) Press** the "UP" Control Valve to lift the load to a height needed. Insert the safety pin in the closest corresponding hole in the bottom extension, lower the jack by pressing the "DOWN" controls Valve slightly so the weight of the unit is resting on the safety pin.

**WARNING:** Before doing any work, make certain that the load and stands are stable.

Note: When Handle and Pin are not being used, make certain that they are securely stored so that they are easily accessible the next time the tool is used.

### **Maintenance**

Your Portable Air Jack is best operated with an Airline oilier. IF you are using the Air Tool without an Airline oilier, follow the steps below.

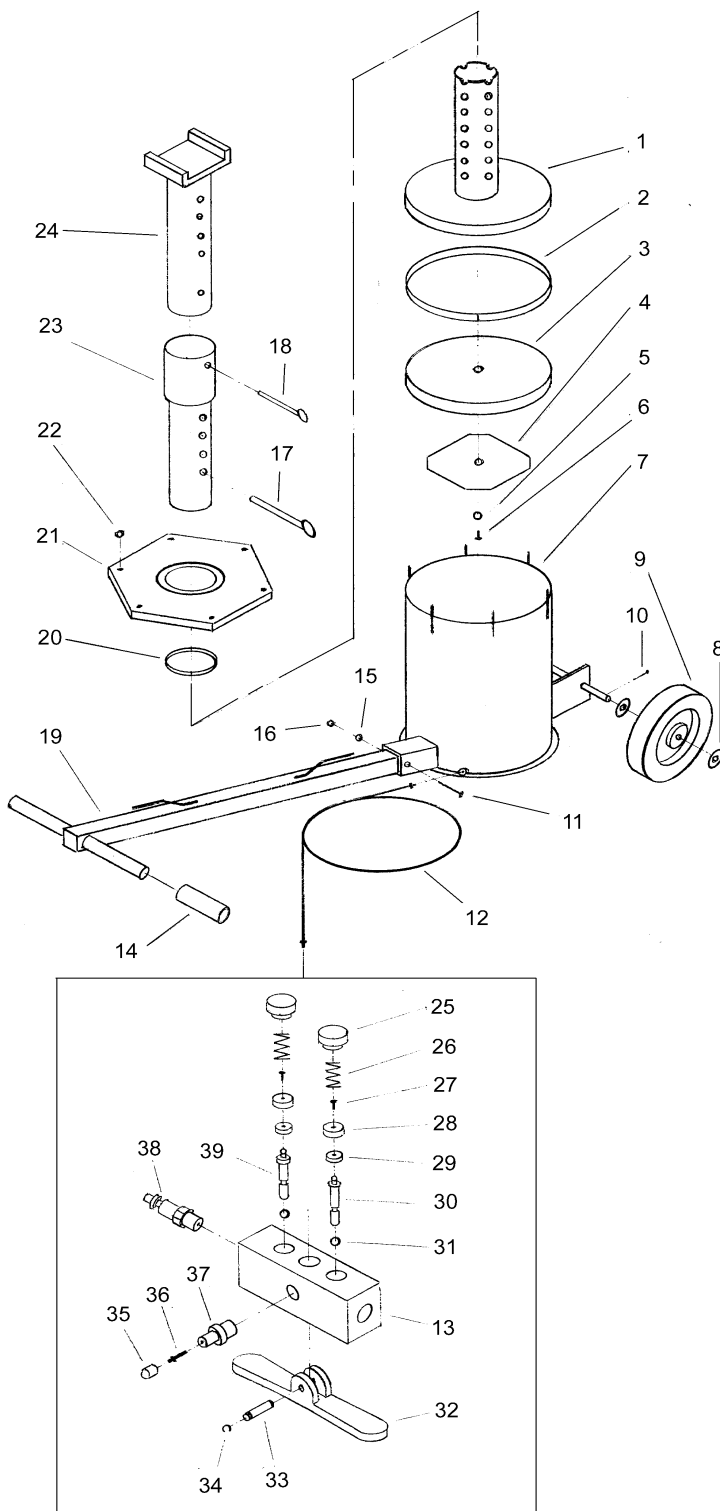
**Step 1)** Disconnect the Air Tool from the air hose.

**Step 2)** Apply a few drops of Pneumatic Tool Oil through the air line before each use, or Every hour it used continuously.

**Troubleshooting**

**Air Jack can not lift at load or near capacity:** The air pressure may be to low. Check your PSI.

**Air Jack does not lift smoothly:** Lubricate the air cylinder. Remove the bolts and the cylinder cover, Lift the Piston weld assembly to the piston stops and till, Tilting will allow the piston to clear the piston stops. Clean and lubricate using light engine grease.



**EXPLODED DRAWING AND PARTS LIST**

---

<b>NO.</b>	<b>DESC.</b>	<b>QTY.</b>
1	Low Post	1
2	Gilding Ring	1
3	Seal Ring	1
4	Washer	1
5	O-Ring 16x2.4	1
6	Bolt M12x25	1
7	Air Cylinder Set	1
8	Washer 20	4
9	Wheel	2
10	Pin 5x30	2
11	Bolt M8x60	1
12	3/8" Air Hose Set	1
14	Handle Grip	2
15	Washer 8	1
16	Nut M8	1
17	Locking Pin	2
18	Safety Pin	1
19	Handle Assembly	1
20	Guiding Ring	1
21	Cap Set	1
22	Nut M16	6
23	Exploded Post	1
24	Upper Post	1
13	Air Valve Base	1
25	Cap	2
26	Spring	2
27	Bolt M3x6	2
28	Ring	2
29	Seal Washer	2
30	Valve Core	1
31	Ring 2.8x1.8	2
32	Pad	1
33	Pin	1
34	Retaining Ring	2
35	Cap	1
36	Valve Stem	1
37	Coupler	1
38	Coupler	1
39	Valve Core	1
40	Optional 45" Extension	